



suvapro
CERTIFICATION
E 7164.e

Pinguino 



THE GREAT LITTLE PERFORMER FOR MOBILE ICE RINKS

ICE RESURFACING

The trend towards mobile ice rinks is increasing; yet, up until now, treating them has been difficult, with no device on the market able to clean and prepare such small ice surfaces. WM ice technics has now come up with the answer – *Pinguino*! This very compact ice resurfacer (length 3 m, height 2 m) makes use of the proven technologies of WM ice technics in a highly agile form. The *Pinguino* boasts a further innovation: it is the first machine of its size that can efficiently plane the ice. The driver's front seating position is also unique. With its powerful and elegant design, **this little *Pinguino* is capable of great things!**



PINGUINO
presentation



PINGUINO
Dreams on Ice



suvapro

CERTIFICATION

E 7164.e



TABLE OF CONTENTS

<i>OPERATION & COMFORT</i>	6
<i>ICE RESURFACING</i>	8
<i>CUSTOMISATION</i>	9
<i>LIGHTING</i>	10
<i>SERVICE</i>	11
<i>TRANSPORT</i>	12
<i>CUSTOMER SERVICE</i>	14
<i>DATA & FACTS</i>	16
<i>INCLUDED IN DELIVERY</i>	17
<i>OPTIONAL EXTRAS</i>	17
<i>IMAGE GALLERY</i>	18



OPERATION & COMFORT



Water dosing



Comfortable access

Sprung driver's seat



Parking brake



Controls for water, planing device and snow tank cover



Controls for snow tank cover



2 guide rollers



Drive pedal



Side mirror



Tyres with spikes

Reversing camera



Power-assisted steering



ICE RESURFACING

Planing unit



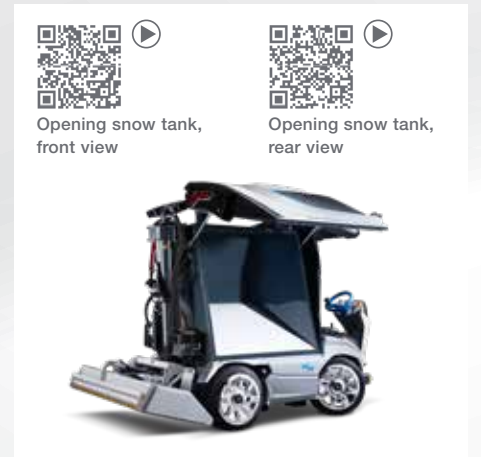
Wiper cloth



Brush



Manual blade adjustment



Stainless steel snow/water tank

CUSTOMISATION

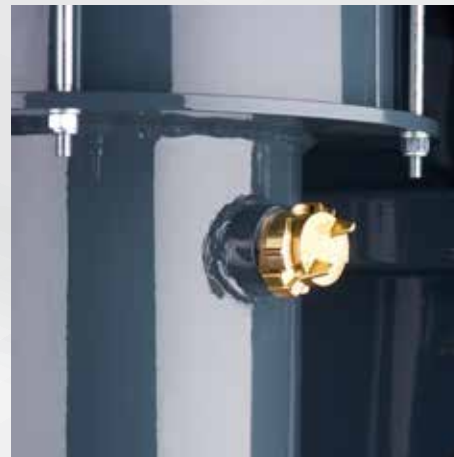
Planing device can be raised for simple and safe blade changing



Raising planing unit



Washing system for horizontal conveyor screw



Washing system for vertical conveyor screw



Washing system connector



Conveyor screws



Filling water tank

Customisation

Whether for advertising or messages from sponsors, the visual design of WM Pinguino can be individually customised to your wishes.

LIGHTING

Front lighting: integrated in structure



Flashing warning light



Side-mounted working lamp



Rear reflectors



Rear spotlight

SERVICE

Easy to access petrol/oil tank



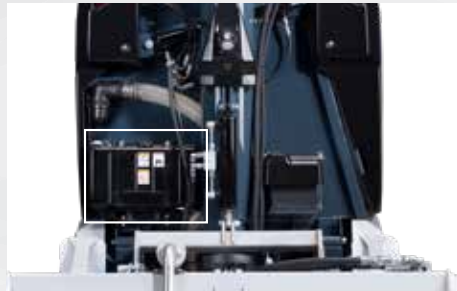
Seat base tilts



Filling petrol tank



Hydraulically tilting snow/water tank



Planing device can be raised for simple and safe blade changing



Easy to access motor compartment (seat base tilts)



Hydraulically tilting snow/water tank

TRANSPORT

Nose, standard position



Nose folds up, position 1



Nose folds up, position 2



Planing device fold up



Tilting driver's position 1



Tilting driver's position 2



With the nose folded up and the planing device removed the machine can be transported sideways on a truck!



Lifting points for forklift truck



Can be loaded using a forklift truck



Loading
Pinguino



Can be transported on a trailer



CUSTOMER SERVICE

User friendliness

High-quality components and sophisticated construction techniques simplify and minimise servicing operations.



Comprehensive operating instructions

The operating instructions contain all you need to know about applications and servicing operations, as well as all safety instructions.



The right replacement part, every time

You need a replacement part? We can deliver it immediately, even outside business hours!



Quality guaranteed

WM Pinguino is a product that is designed, manufactured and assembled in-house. Only in this way can we guarantee best quality and punctual delivery.

Service and support

All our internationally networked team of technicians undergo continuous training and can assist if required.



Series production

All the machines from WM ice technics are manufactured in series. We thus know exactly which components have been used and can always supply the right replacement part as necessary. At the same time various options can be retrofitted precisely and without major effort – even years later.

Quality awareness

From the production of individual components to the final quality testing, each step can be tracked precisely. All employees are fully trained in their specialist areas and perform their duties meticulously. The result is a sophisticated product for our customers, manufactured to the highest quality standards.



DATA & FACTS

BENZIN

Motor Petrol	Kohler CH680 V2 – 674 cm ³
Power	16.8 kW / 22.5 HP - 3,600 rpm

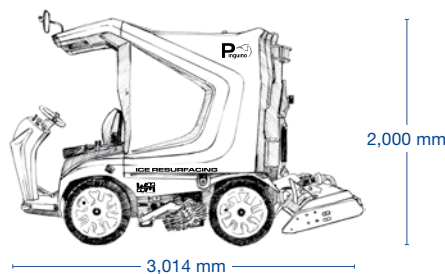
Unloaded weight	1,250 kg
Water tank	340 l
Snow bin	1 m ³ - compacted 1.25 m ³
Fuel tank	15 l
Drive	Hydraulic stepless
Axles	Single wheel drive
Steering	Hydraulic
Footbrake	Hydraulic

Wheelbase	1,230 mm
Track width	1,025 mm
Track radius	2,740 mm
Turning radius	2,900 mm
Dimensions	LxWxH 3,014 x 1,497 x 2,000 mm
Ground clearance	100 mm
Blade width	1,400 mm

LPG

Motor LPG	Kohler CH730 LP V2 – 725 cm ³
Power	16 kW / 21.5 HP - 3,600 rpm

Parking brake	Mechanical parking brake on rear wheels
Hydraulic system	18 cm ³ axial piston pump for drive, 6 cm ³ work units + cylinder movements, 4.4 cm ³ steering
Diameter of screw conveyors	170 mm



STANDARD EQUIPMENT

- ▶ Parking brake
- ▶ 2 board guide rollers
- ▶ Watertank-snowbin made of stainless steel
- ▶ Spring suspended drivers seat
- ▶ Horn
- ▶ 1 blade
- ▶ Easily accessible engine compartment (tiltable drivers seat, hydraulically tiltable snowtank)
- ▶ Hydraulic power steering
- ▶ 2 hydraulically powered screw conveyors
- ▶ Hydraulic carriage pressure system
- ▶ Hydraulic opening and closing of snow bin cover
- ▶ Manual blade adjustment
- ▶ Tiltable planing device for easy, safe blade changing
- ▶ Tiltable operator's platform (2 positions)



suvapro
CERTIFICATION

In conformity with Suva no. E 7164.e type-examination certificates

INCLUDED IN DELIVERY



Pinguino



Blade protector



Wiper cloth



Wheel wrench



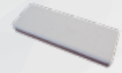
6-mm hexagon socket
T wrench



Planing device wrench



Laceration-proof safety
gloves



1 grindstone



Water connector



1 fuse set



Key fob

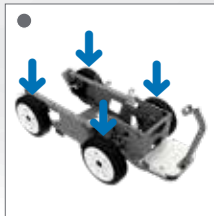


Manual

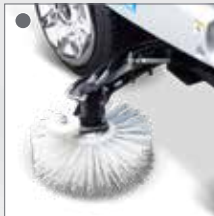


Replacement parts list

OPTIONAL EXTRAS



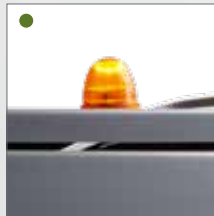
All-wheel drive



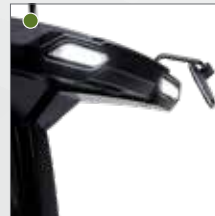
Brush



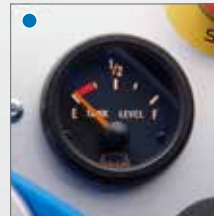
Mirror kit



Flashing warning light



Lighting package



Water tank signage



Conveyor screw overload
warning system



Reversing camera



Washing system for
vertical conveyor screw



Washing system for
horizontal conveyor screw



Slide extension



Spare wheel

- Ice quality
- Comfort
- Overview

IMAGE GALLERY



With slide extension







ADI DESIGN
INDEX 2016



blue power
www.wm-on-ice.com



Snow tank: 1 m³ (compacted 1,25 m³)
In conformity with Suva no. E 7164.e
type-examination certificates



Snow tank: 1,8 m³ (compacted 2,25 m³)



Snow tank: 3 m³ (compacted 3,7 m³)
In conformity with Suva no. E 7138.e
type-examination certificates



Snow tank: 4,1 m³ (compacted 5,1 m³)
In conformity with Suva no. E 7139.e
type-examination certificates